

921-0032
Boe

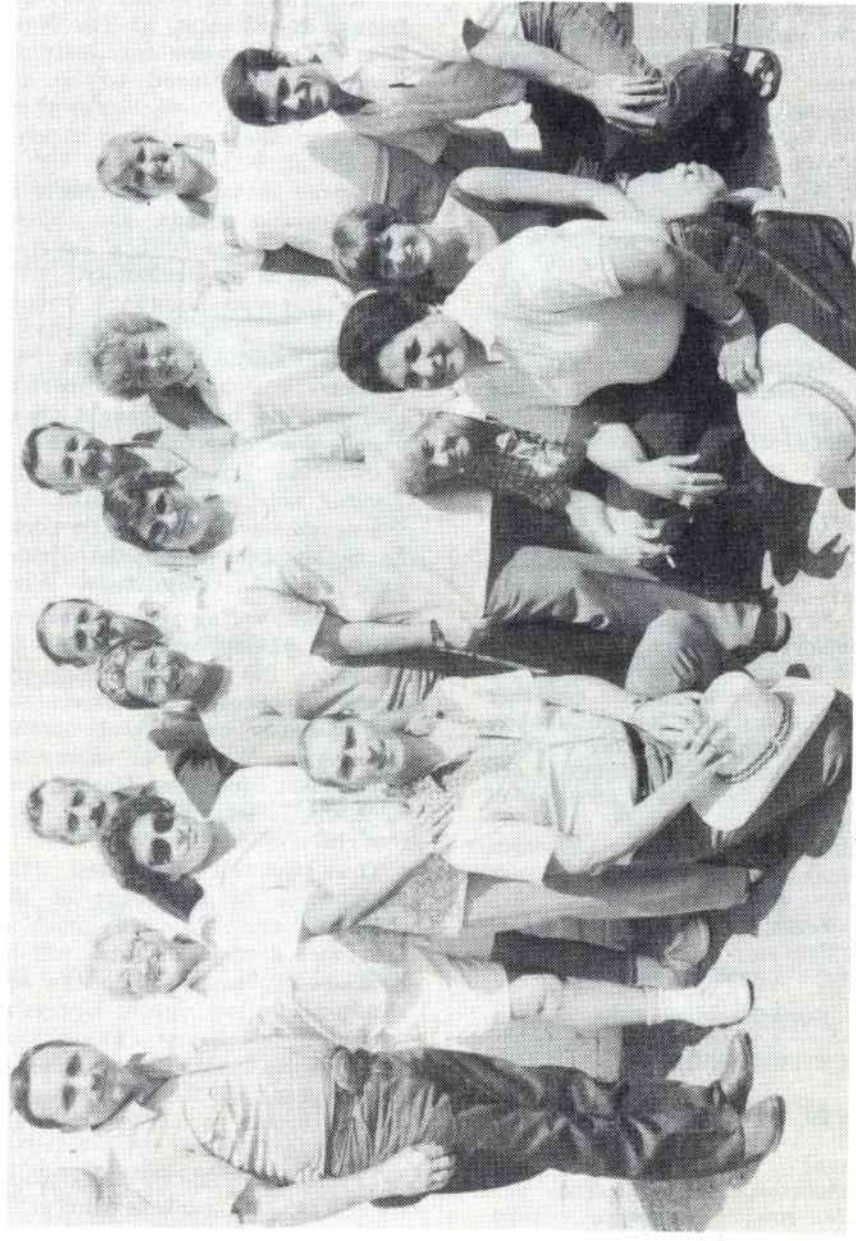
pat
568
629h

Downtown Fort Worth, 1902

Lambda

Community News





This is part of the Lambda Community News staff 1983

FIRST COURT MEETING

The court of the Golden Lions held their first meeting on Aug. 15 1983 at The Office Club with Empress Raina Lea and Emperor Dale Glenn presiding.

Plans were developed for a Halloween candy drive for underprivileged children and the annual Toys for Tots project was discussed. Also, goodwill trips to Dallas and Denver Court functions were planned. As a break from all the hard work a Red & White Ball is projected for February that promises to be fun, with King Father, Rosie and Queen Mother, Linda Dale presiding over the festivities. A great big **thank you** to the reigning monarchs and Court members for their support and cooperation with National Llambda, Inc. Please contact any Court member if you would like to participate in these or any Court functions.



TEQUILA SUNRISE
1612 Park Place
Ft. Worth, Tx. 76110
927-9861

Open 6pm to 2am

Happy Hours

6pm to 8pm

THE LEMON TREE



804 Pennsylvania
Ft. Worth, Tx. 76104
332-5519

ANTIQUES & ART
Used & Rare Books
Appraisals
Glass, Furniture,
Records,
Magazines,
Bric-a-brac

Liquidation of Estates

Betty Kelly



ADAM'S LIBBER

By Berta Jo Orr

I once heard someone say, the reason God created woman from the "rib" of Adam was to present a picture of equality. As we all know, the rib is located below the head in the human body. Therefore woman cannot claim superiority over man. By the same token, the rib is located above the feet in the body. This should dispel any feeling of inferiority to man.

Many of you reading this are probably saying what has this got to do with anything? My contention is that many of our women in the gay community feel they have little to offer to the community. But I feel differently.

I have seen talent, intelligence, originality and plenty of spunk put forth in causes you believe in. However when these causes have failed or have not taken on the pose to succeed that you had hoped for, you have taken your efforts out of the race and laid back saying, "why bother?"

Time really never costs us anything and my dear Sisters, your time is a more precious commodity to this community than any amount of money you could ever spend or raise.

National Llambda is not an ancient organization, nor is it for the ancient. The Court and Council are not organizations for "Drag Queens & Dykes" as someone so inaptly put it.

These three organizations working together certainly have shown there is a need to call all, men and women alike, to the starting gate to help win the race of recognition. Gay is Gay and not a "scourge."

The wall existing between men and women in the Gay Community has created strong feelings of animosity and hatred at times. I feel, ladies, we have done a great deal to build this wall only because we fear the

feeling of disappointment and rejection. Do we all have to be the center of attraction? Do we all have to be in the limelight? Believe it or not, ladies, the behind-the-scenes person has a lot more fun and satisfaction in a job well done than many of those who stand on top.

I only hope each and every one of you will take a little time to sort out some of the things I have said and give it a whirl.

I mentioned only three organizations seeking out your help and time, but there are many more in the community that need your support.

Ladies, each one of you can be considered a time bomb of energy. Light the fuse and explode with ENERGY! You could be the "Boom" heard all over Texas.

BENEFIT RAISES \$1,200

Brunhilda "Peanuts" Pinnow was born somewhere in Germany in 1955. She came to the United States in 1960. Her mom is in California and her dad is still in Germany.

Peanuts has been in Fort Worth about 12 years. Early in June, she and her lover, Susan Hamm, were in a very bad car wreck. Peanuts had both legs broken, an ankle, jawbone turned sideways, and a severed bottom lip. It also knocked out all her front teeth. Her first words to her boss was, "Do I still have a job?"

Susie Hamm suffered a bad head injury and collapsed lungs. She was in I.C.U. several weeks and has since been transferred to Saint Josephs.

A benefit was given by National Llambda, Inc., at the Downtowner in July. Over \$1200 was raised for both women. They still need our prayers and support. Anyone wishing to contribute money and cards should contact National Llambda.

National Llambda, Inc.

BUILDING A GAY FUTURE

The table was covered with all the makings of a feast--roast beef, baked ham, chicken and dumplings, baked beans and a variety of salads that would make a top-notch salad bar wilt in comparison.

The mood was like that of a Sunday afternoon church social, bits of conversation and laughter floating through the air as the 30 or so men and women gorged themselves on the feast that served as a prelude to the main event.

The annual membership meeting of National Llambda, Inc. began, and after such routine matters as the reading of the minutes and committee reports were dispensed with, the conversation shifted to what the meeting was really about--membership.

"My lover just turned 30," one woman said, "and she hasn't joined. Young people don't think anything's going to happen to them, they don't think that they're going to get sick, or that they're going to get old."

The fast-paced, live-for-the-moment nature of modern urban gay life doesn't exactly lend itself to much thought about the future. At least not more of the future than "What bar I'm going to tonight?" or "What outfit will best present the attitude that I am trying to convey?"

But at least one Fort Worth gay organization is concerned with what happens to members of the gay community after the bright lights of gay nightlife grow dim.

National Llambda, Inc. was formed in 1981 with the goal of eventually establishing retirement centers for elderly and disabled gays in Texas.

In less than two years, National Llambda has raised more than \$10,000, which has been placed in

Certificates of Deposit to accumulate interest until the time comes for the organization's goal to become reality.

"In the past most gays were pretty much closet cases," said National Llambda President Jim Morgan. "Now more and more gay people are coming out in the open with gay activities and events.

"We started this organization to establish a place for members of our community who are disabled or retired to have a place where we could live within our means and be around people we can relate to," he said.

That dream is gradually beginning to take shape. A 10-acre site just south of Burleson has been promised as a donation for the state's first gay retirement center after the organization receives its federal tax exempt status. Such status would make donations to National Llambda tax deductible for federal subsidy.

"Various churches and other groups have apartment complexes for their retired members that are federally subsidized, they pay rent according to their income and the difference is paid by the government,"

National Llambda's goal is for its center to be self-supporting, with any profits being used to build more centers or to help individuals who need financial help to move into a center.

National Llambda has raised funds in a variety of ways, including benefit shows and an annual yard sale of donated items. Plans have been made to establish a permanent booth on Saturdays and Sundays in a local flea market, and a regular bingo game as a fund-raising device has been discussed as a possible future project.

In addition, National Llambda is publishing the weekly newspaper "Llambda Community News" in hopes of raising funds, but equally

importantly, to provide the Fort Worth gay community with news about Fort Worth.

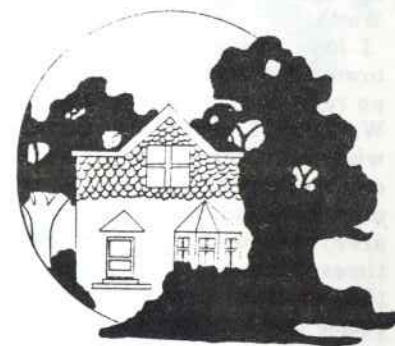
But the success of all these projects, and ultimately the center itself, rests on more than an occasional donation. National Llambda has only 57 members working diligently so that someday aging and disabled members of the Fort Worth gay community will have a place to live. The organization is actively seeking more members to further build upon its already sound base. Membership fees are \$10 per year, \$200 lifetime. (For more membership information, see the membership application on the back of this newspaper.)

"We are a huge force, if we are united and pulling together for this cause," Morgan said. "The population of Texas is about 15 million and

over 2 percent are gay. If just the 2 percent became members there would be \$3 million raised annually. We could build several homes over the state.

"We need to get ourselves together and plan for what we're going to do for ourselves and plan for the future," he said.

The future may be sooner than you think.



The Office Club

1209 Jacksboro Highway • Fort Worth, Texas • 624-0187

Presents

Labor Day Anniversary Festival

FRIDAY, September 2nd
8 til 10

Stormy & Pat
THE LOVE CONNECTION

Donations for Muscular Dystrophy Accepted All Week

SUNDAY
September 4th
9 til 11

More Labor Day Celebrating
Kristi Renee
Jim & Bill
Pat & Joe

*Drink
Specials*

SATURDAY, September 3rd
8 til 11

Stormy & Pat
THE LOVE CONNECTION

Also featuring
Pat Wyatt & Michelle Lynn

NO COVER CHARGE

A LETTER OF THANK YOU

I came to this city of love years ago having visited Ft. Worth as teenager. Once seeing this city my mind raced with thoughts of the time when I could live in this city. My dreams were fulfilled when in 1970 I was able to move from the large busy confines of Houston, to the quite leisurely pace of Ft. Worth.

I have made my home in your town for almost 14 years and have no regrets that come to mind. Ft. Worth will always be my home, whether I live in any other state or city across the nation. Fond memories and beautiful times will always be with me. Not the bad times, hard times or problems of the past, but the good times the people of our community have given to me over the years.

The people of our community have been like a family to me, giving of themselves when others turned there backs and walked away with a shrug. No. Ft. Worth, you should be proud of yourselves, you have a cherished attribute to live up to that no other city in Tx can boast. Love, iriendasnip and understanding, but above all benevelance to your fellow man. You make a body feel at home when new to our community, you open

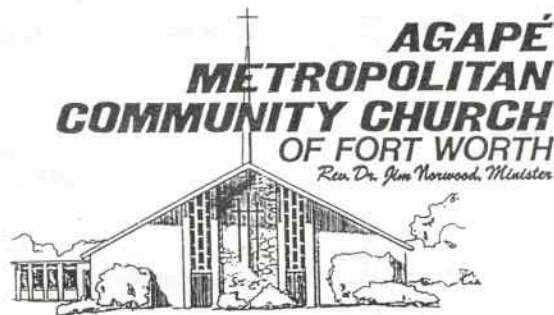
up your hearts and take them under wing. For this I say Thank You and give yourselves a pat on the back. Don't change Ft. Worth, be yourselves, friendly, loving, understanding.

I have met many friends in Ft. Worth over the years, some are still friends to this day, some were just ships passing through, but, friends just the same. So many I could not begin to mention tham all, but they all have a place in my heart.

I was reared in a small N.J. town, traveled many places and lived in many large cities, but none can compare to Ft. Worth. The hospitality is unsurpassed and comes freely from within the community, from the heart.

Again, I say Thank You Fort Worth. Don't change. I like you just the way you are, progress in unity, progress to grow, growth brings changes, but changing doesn't mean loosing what this community has for each other. I have enjoyed, worked, fought and cried for Fort Worth over the years, for your community, for this I say Thanks for allowing me to be a part of your great city, a part of YOU.

From a Friend



COMING SOON DEDICATION WEEK SEPT. 14-18

the "AFTER HOURS"
trap 1815 E. LANCASTER FT. WORTH, TEXAS 335-0031

Friday 2 am to 4 am
Saturday & Sunday
At The Trap

★ ★ ★ **COFFEE** 

★ ★ ★ **SOFT DRINKS** 

★ ★ ★ **SNACKS**

STAR SCOPE**ARIES** March 21-April 21

Bold and aggressive Mars continues to emphasize love, romance and creative projects through the end of the month. A direct approach helps you enjoy all the romantic possibilities offered now. Go for it, Aries!

TAURUS April 22-May 22

Venus, your planetary ruler, appears to be moving backward into the 4th house of home and family beginning the 27th of the month. The home scene may be due for a re-evaluation. An opportunity to resolve problems with parents or mate occurs on the 31st. Prepare to compromise.

GEMINI May 23-June 21

Mercury moves from work and routine-oriented Virgo to Libra on the 29th, placing its emphasis on one-to-one relationships. Late Gemini's (those born June 13-21) are still in store for some new major developments in the area of relationships. Let others know your thoughts. Speak up Gemini, you've never had any trouble before!

CANCER June 22-July 21

The full moon on the 23rd emphasizes matters concerned with sex, regeneration, and other persons resources. The next two weeks are certainly not the time for borrowing or lending. Friends and money just don't mix. You may find an old friend back in your life before months end. About sex!... you take it from there.

LEO July 22- Aug 23

With your ruler entering Virgo, your 2nd house of finances and impulsive Mars still in your sign, your naturally extravagant nature shifts into high gear. Think twice before you make unnecessary expenditures. Who sang "money can't buy me Love"? You could be humming that tune before the months end.

VIRGO Aug 24-Sept 23

Energy, ambition and recognition are yours this month as the sun enters your sign on the 24th. This is your time to shine! Minor problems could crop up around the 29th concerning your work or health. You're ready for a change.

LIBRA Sept 24-Oct 23

The 11th house of hopes, friends and wishes is highlighted now as you planetary ruler Venus, moves back then on the 28th. You might feel a need to confide in a close friend about a relationship. Some of them have been a bit stormy lately. A close friend may offer welcome advice.

SCORPIO Oct 24-Nov 22

Saturn, the Cosmic Cop enters your sign on the 24th for approximately 2½ years. Developments in your life take on a more serious quality with responsibility and duty dominating the scene. Early Scorpions will begin to feel the effects almost immediately. 'The next few months could be a test of strength.' Patience will pay off.

SAGITARIUS Nov 23-Dec 21

Jupiter and its sidekick Uranus continue to transit through your sign bringing the unexpected to every area of your life. You are ready to break loose! Don't let a desire to have it your way back fire this week. Important people in your life may not see it that way at all.

CAPRICORN Dec 22-Jan 20

Saturns move into Scorpio on the 24th indicates a major change in attitude for you. This 2½ year cycle emphasizes the need to seriously consider whether you are where you want to be, and if not, why not. A gradual weeding out process begins to occur in the area of friendship.

Starscope [con't]

Aug. 24, 1983 marks the beginning of a period when you capricorns who have patiently worked to realize some goal will finally begin to see the results of your efforts.

AQUARIUS Jan 21-Feb 18

For some less adventurous signs these past weeks, and the ones coming up, could prove to be too much! You continue to reap unexpected benefits from new friendships. This, coupled with an unusually optimistic attitude helps you through any difficulty. Luck seems to be on your side.

PISCES Feb. 19-Mar. 20

An air of uncertainty surrounds your professional interest. It may be hard to know just where you stand with lovers or employers. Neptune, your planetary ruler is approached by Venus toward the end of the month, bringing with her an elusive but exciting end of summer romance.

DON LEE-Professional Astrologer, member of the American Federation of Astrologers, past president of the Astrological Society of Ft. Worth, is available for personal consultation, individual charts are calculated for month, day, year and time and place of birth and indicate the years upcoming friends. Contact him in Ft. Worth at 924-4622 or 926-1852.

CHOCOLATE CHIP CHEESECAKE

1 Lg. pkg. slice & bake chocolate chip cookies, 2 - 8 oz. pkgs. cream cheese, 1 cup sugar, 2 eggs, 1 teasp. vanilla. Slice ½ of the cookie dough into the bottom of a greased and floured 9 x 13 pan. Mix cream cheese, sugar, eggs and vanilla until smooth. Pour over layer of cookie dough. Slice remainder of dough over filling. Bake at 325 deg. for 25-30 minutes. Cool and cut into squares.

CONGRATULATIONS
to
LLAMBDA COMMUNITY NEWS

Finally,

Fort Worth has it's own gay newspaper!

Thanks!

You have my love and support.

Rev. Chet Rice

THE BRIDGE BUILDER

Vern

UNITED WE STAND

An old man going a lone highway
 Came at evening, cold and gray,
 To a chasm vast and wide and steep
 With waters rolling cold and deep.
 The old man crossed in the twilight
 dim,
 The sullen stream had no fears for
 him,
 But he turned when safe on the
 other side,
 And built a bridge to span the tide.

"Old man," said a fellow pilgrim near,
 "why are you wasting your strength
 building here?
 Your journey will end with the
 ending day
 You never again will pass this way.
 You've crossed the chasm, deep and
 wide,
 Why build you this bridge at
 eventide?"

The builder lifted his old gray head.
 "Good friend, in the path I have
 come," he said
 "There followeth after me today
 A youth whose feet must pass this
 way.
 The chasm that was nought to me
 To that fair haired youth may a
 pitfall be;
 He, too, must cross in the twilight
 dim-
 Good friend, I am building this
 bridge for him."

why do we want things changed
 and then we don't? It seems to
 me that all we do is talk. I have
 been with the Imperial Court three
 years and all I have seen has been
 people fighting among each other.
 Some quit and then they come
 back, only because they believe in
 the court. Others return either
 because they want a title or a
 position to suit themselves or their
 group.

We all want to go by the rules of
 the court, but then again we bend
 them to suit ourselves. Why must
 we do it that way? We will never
 succeed in that form. We want
 more people to join our court and
 council, but do we want to listen
 to their ideas? No, we listen only
 to what we want to hear.

Let us take a look at ourselves, and
 try to do better for the court.
 We are one, and together we must
 stand united. Love can bond all of
 us together, as it has many times
 before, and always will.

Love, Rosie

To Err is
 Human—
 To Continue
 is Stupid

York Dealer Heating & Air Conditioning

G & L REFRIGERATION
 Sales, Service & Installation

Gayle McKinney 738-7788 or 237-5415

THE DIRECTORY

TARRANT CTY ORGANIZATIONS

Center for the Community
 2412 Lipscomb.....926-3521
 Crisis/Suicide Intervention
 24 Hour Hotline.....336-3355
 Dignity/Fort Worth, P.O.Box 13039
 Arlington, Texas 76103.....283-8588
 Ft. Worth Sports Association.
 246-3573
 Friends of Ft. Worth
 1601 8th.....926-3331
 Gay Pride Week Association..294-2447
 Lambda AA.....332-3533
 Lutherans Concerned, P.O. Box 881
 Bedford, Texas 76109.....595-1176
 National Llambda, Inc.
 National Llambda, Inc.
 The Retirement Center.....478-2872
 Tarrant Co. Gay Alliance
 P.O. Box 11044 Ft. Worth, Texas
 571-6977
 V.D. Clinic
 1800 University.....870-7223

FT. WORTH CHURCHES

Agape MCC
 4616 S.E. Loop 820.....535-5002

TEXAS ORGANIZATIONS

Lesbian/Gay Democrats of Texas
 P.O. Box 822, Austin...512-778-8658
 Tx. Lesbian/Gay Student Org. Col.,
 P.O. Box 275, UT. Union Bldg.
 Tx. Gay Task Force
 Dallas.....214-827-2957
 Denton.....817-387-8216
 Houston.....713-869-7231

ARLINGTON CLUBS

651 Arlington.....275-9138
 Tarrant County Mining Company
 265-6448

FT. WORTH CLUBS

Come Along Inn
 S. Jennings.....332-0720
 The Corral
 621 Hemphill.....335-0196
 DJ's
 1308 St. Louis.....927-7321
 651 Club, 651 S. Jennings...332-0745
 Tender Trap
 1815 E. Lancaster.....335-0031
 Tequila Sunrise
 1612 Park Pl.....927-9861
 The Lumber Co.
 700 S. Jennings.....332-0192
 The Music Box
 704 Carroll St.....336-2472
 The Office Club
 1209 Jacksboro.....624-0187
 The Other Place
 200 N. Vacek.....335-1901

FT. WORTH BUSINESSES

Alpha & Omega Print Shop
 1950 Hemphill, Ft. Worth....921-3670
 G G & L Refrigeration
 738-7788.....237-5415
 Jack & Bill's Pianting & Carpentry
 921-4709
 Jim Morgan Insurance.....927-0071
 Macareno, Al-Photographer...735-1614
 Sue's Super Service-Mobile Car Wash
 732-0608
 Morgan Co. Real Estate.....927-0071

NATIONAL LLAMBDA , Inc:

P.O. Box 470282 Fort Worth, Texas

76147

Membership fee of \$10.00 must accompany this application and I agree to pay \$10.00 annually, due by the fourth Sunday of January each year, or \$200.00 for a lifetime membership. I approve of an alternative lifestyle regardless of sexual preferences. I understand I will become an active voting member whose sole purpose is to establish a home for the elderly and disabled. I agree to abide by the By-Laws of this organization.

Name _____ DATE _____

Address _____

SIGNATURE _____



ALPHA & OMEGA

Printing and Graphics

1950 Hemphill 921-3670

Fast • Dependable • Quality Conscious

The Lowest Prices
IN THIS AREA

Letterheads
Envelopes & Postcards
Brochures
Programs
Logo & Form Design
Typesetting, Paste Up
Folding, Collating
Binding

Price Discounts given to Churches
and Service Organizations

FREE PICK UP & DELIVERY
with minimum (25.00) order

921-3670

1950 Hemphill

ALPHA & OMEGA

